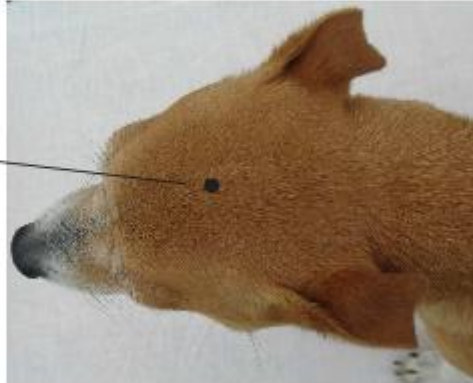


ADVANCED PHOTONIC THERAPY STANDARD POINTS

GV-20

Governing Vessel 20 is on the top of the head, in the 'V' created by the junction of the two parietal crests (bony ridges running back from the top of the eyes).



BL-11

Bladder 11 is between the shoulder blades, in a depression about half an inch on either side of the spine of the first thoracic vertebra (depending on the size of the dog).

LI-11

Large Intestine 11 is in the elbow crease in front of the bone.

LI-4

Large Intestine 4 is on the front leg, between the dew claw and the limb.



Sample Only of Some Standard Points